

CityBike / **Connected Bicycle**

Mock-Ups

Laura Loses Her Bike



Right after Laura received her CityBike, she downloaded the app to get the most out of it.

At first she used the navigation features, but now that she knows the city by bike, she rarely actively uses the app.

One night, Laura takes her bike to meet some friends for drinks. She's unfamiliar with the bar but knows the general location, so she doesn't use navigation.

Laura forgets that she's turned off autolocking as she walks away from her bike.

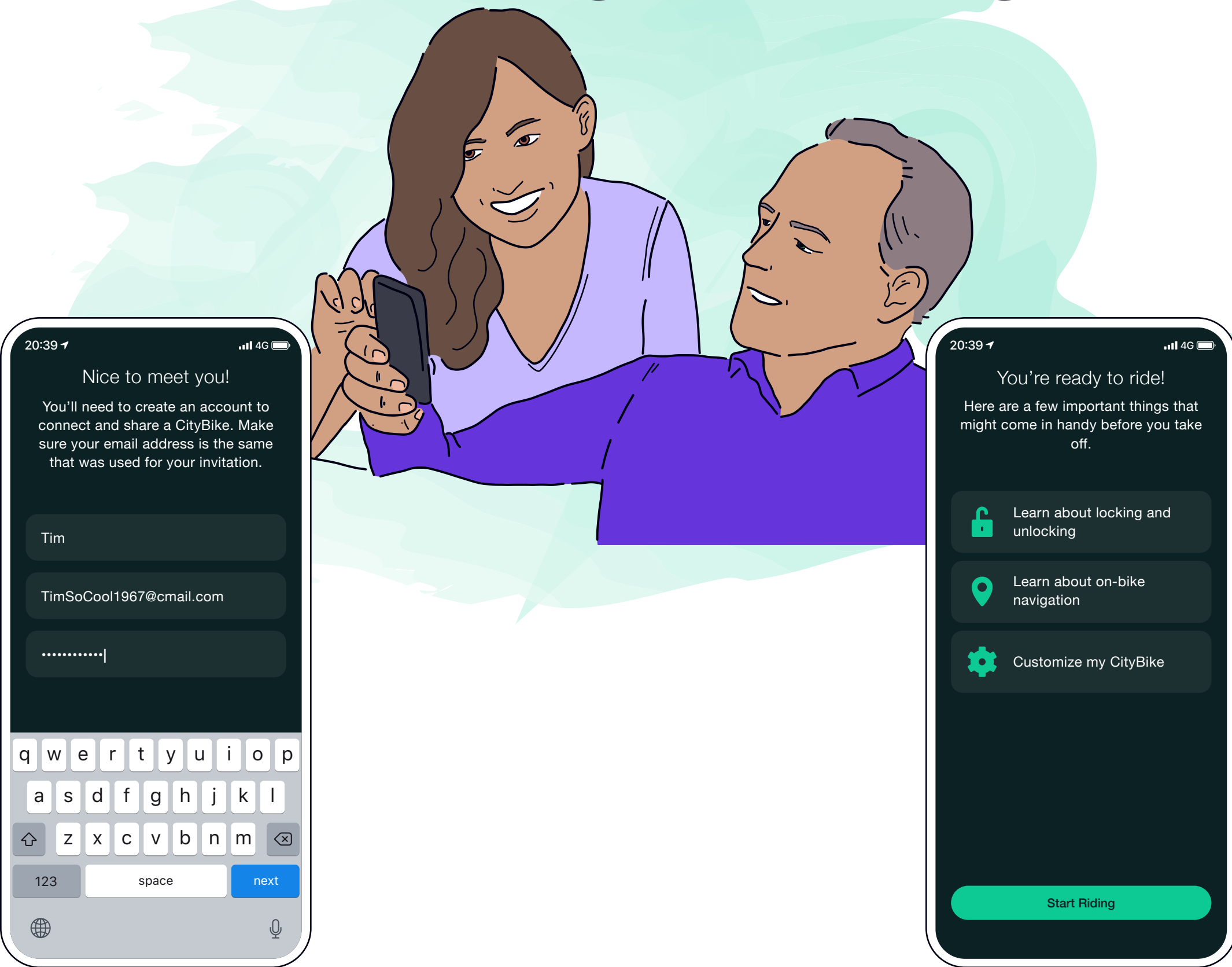


After the last call, Laura leaves the bar and searches for her bike. She tries to ring the bell using the CityBike widget but hears nothing.

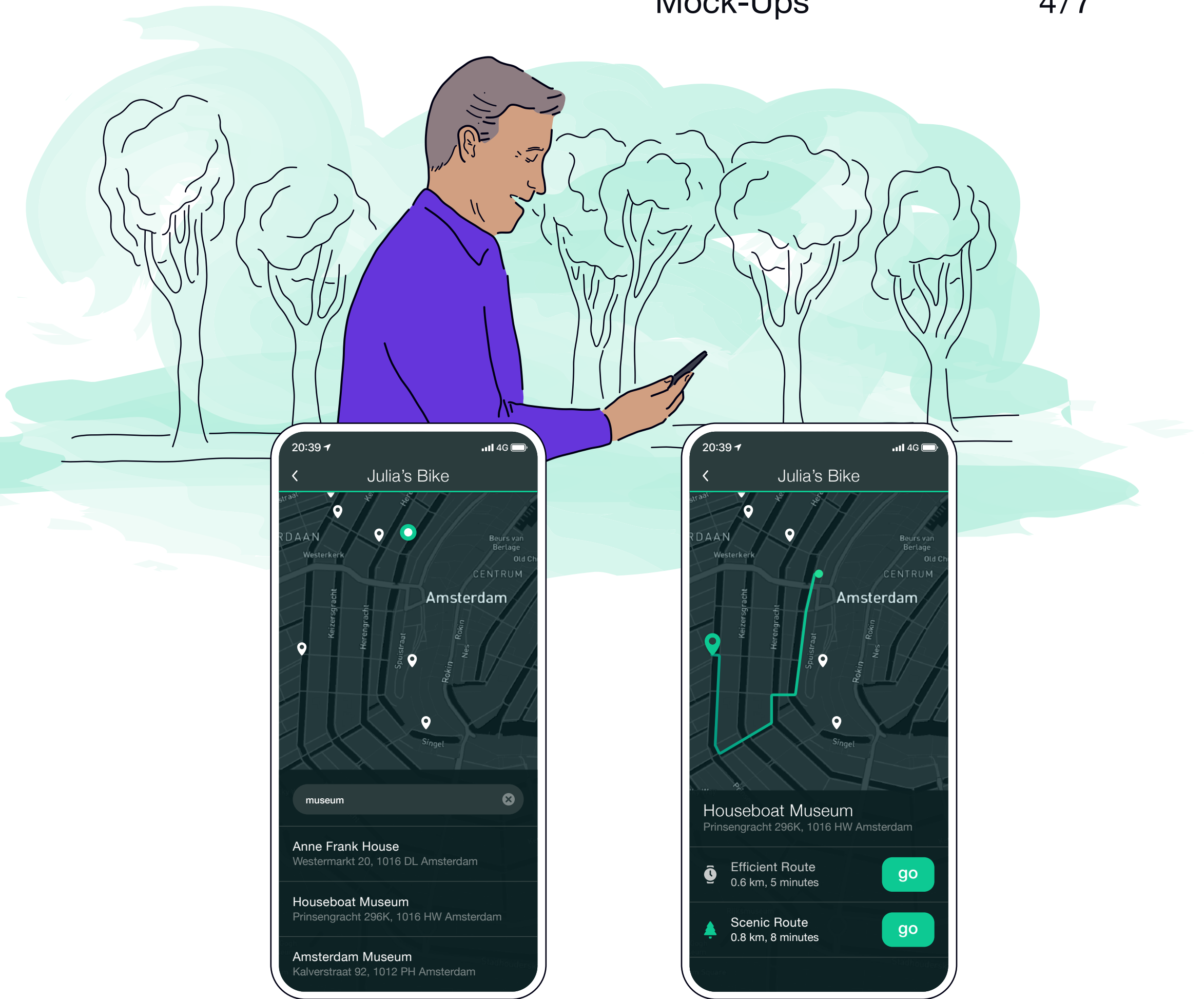
Laura uses the app to locate her bike and sees that it's nowhere near the bar.

Laura marks her bike as stolen so that it will lock the next time the thief stops. Hopefully they'll leave her bike behind as soon as they realize they can't ride it.

Tim Goes Sightseeing



When Tim arrives, Julia encourages him to download the app and create an account so that he can use her CityBike's navigation features.

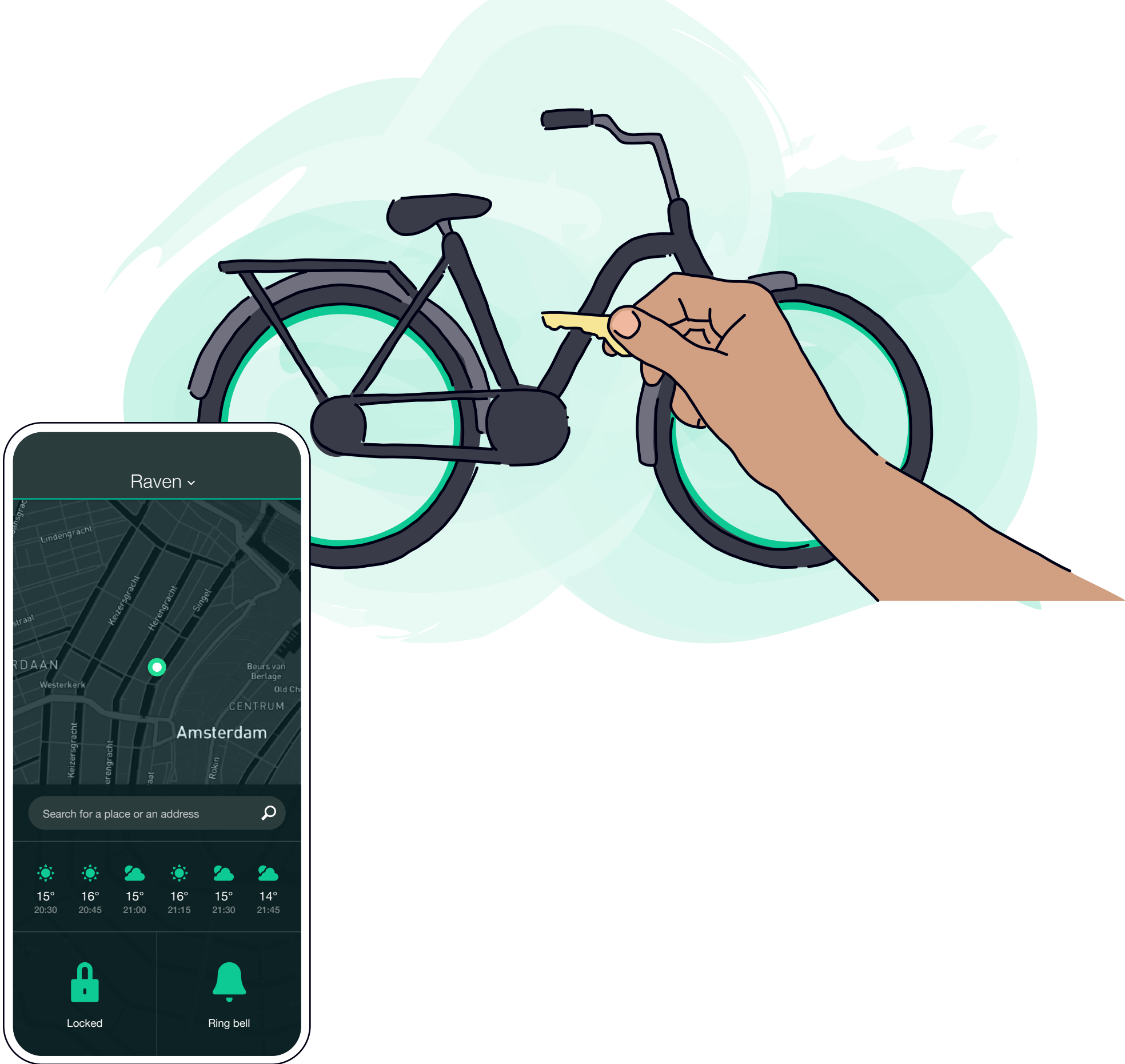


After Julia authorizes him to use her bike, Tim explores the CityBike app to see what he can do with it.

The next morning while Julia is at work, Tim decides to do some sightseeing. He enters the museum as his destination and selects the scenic route.



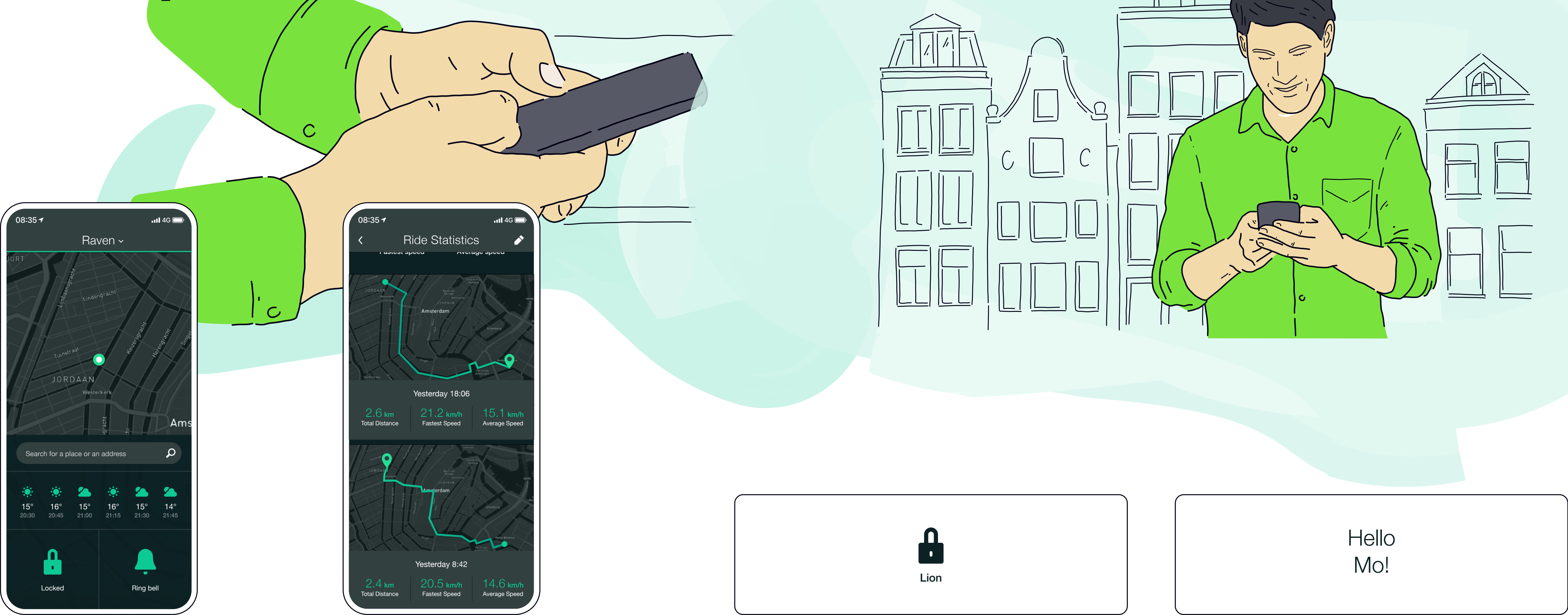
Tim follows the instructions on the bike's screen, and makes it to the museum without any drama.



Tim parks the bike outside the museum. He hears it automatically lock as he walks away.

After all of his sightseeing, Tim returns to Julia's house. His phone runs out of battery as he arrives, so he uses the key to lock Julia's bike.

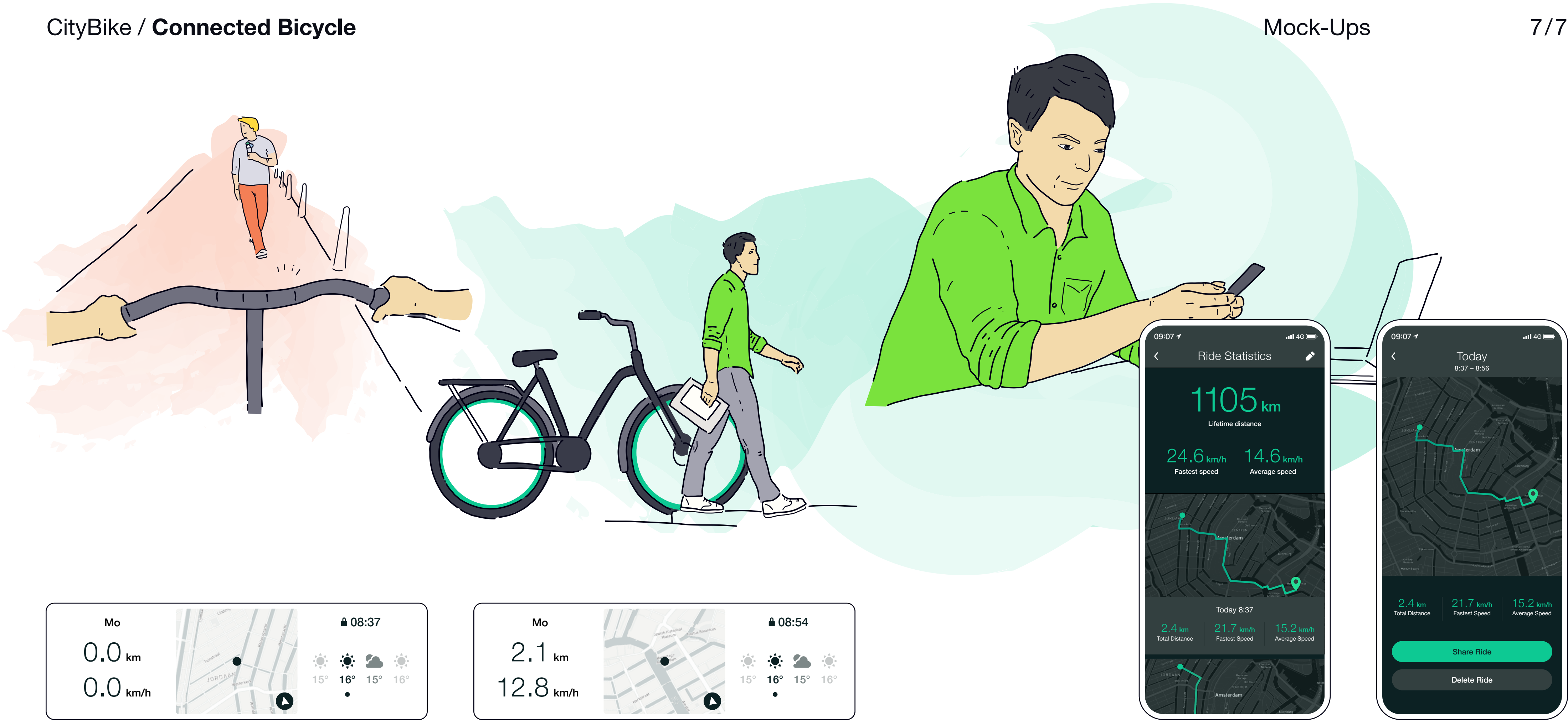
Mo Optimizes His Route



Mo rides his bike to work every morning. Before heading out, he launches the CityBike app and checks the weather to make sure he won't get rained on.

Mo reviews past rides. He's surprised to find that a route he doesn't usually take is shorter than his usual route.

Mo's bike unlocks as he approaches it. He hops on and sets off on his commute. He knows the city by heart, so doesn't use navigation.



In the middle of his commute, Mo sees a tourist meandering down the bike path. He rings his bell.

When Mo arrives at work, he can see at a glance that his commute was shorter than usual. He parks his bike and walks away. It locks automatically.

When he has more time, Mo reviews the data from his morning ride. In addition to being slightly shorter, his new route was also faster than normal. He decides that he'll use this way to get to work from now on.